

605-332-0102

brad@oilstickersupply.com

oilstickersupply.com

Setup for the landscape (H2) label, that is designed for Mitchell1. The settings are below.

Next Mileage

Next Date

72,000

03/31/2021

NEXT SERVICE DUE

Your Shop Name Here

Anytown, USA

(605) 555-1212

#123456

ManagerSE Settings for "H2" Labels

Report/Printer Selection

☐ Estimate
☐ Repair Order
☐ Invoice
☐ Counter Sale
☐ Default Printer
☐ Labels
☐ Follow-up Letters
☐ Tech Worksheet
☐ Fax Printer
☒ Lube Sticker Printer

Print Options

Printer

Godex RT200

Paper Size

Mitchell1

Orientation

Landscape

Template

With Logo - Horizontal Layout

Default Settings

Oil Quality	Odometer	Months
5w30 Mobil Oil	3000	3
10w30 Mobil Oil	5000	5
5w30 Mobil 1 Synth.	7000	6
10w30 Mobil 1 synth.	10000	8

Category

Oil Change

LOF / Category Names

Show Next Appointment

Prompt

Add Recommendation for Next Service

☒

Print Margins (Inches)

Left

0.10

Top

0.03

Right

0.10

Bottom

0.05

Tagline

Select Logo

Your Shop Name

Sioux Falls, SD

605-332-0102

Print Preview

Print Sample

Next Mileage

Next Date

72,000

7/25/2024

Your Shop Name

Sioux Falls, SD

605-332-0102

#1234567

Setup Online Reports

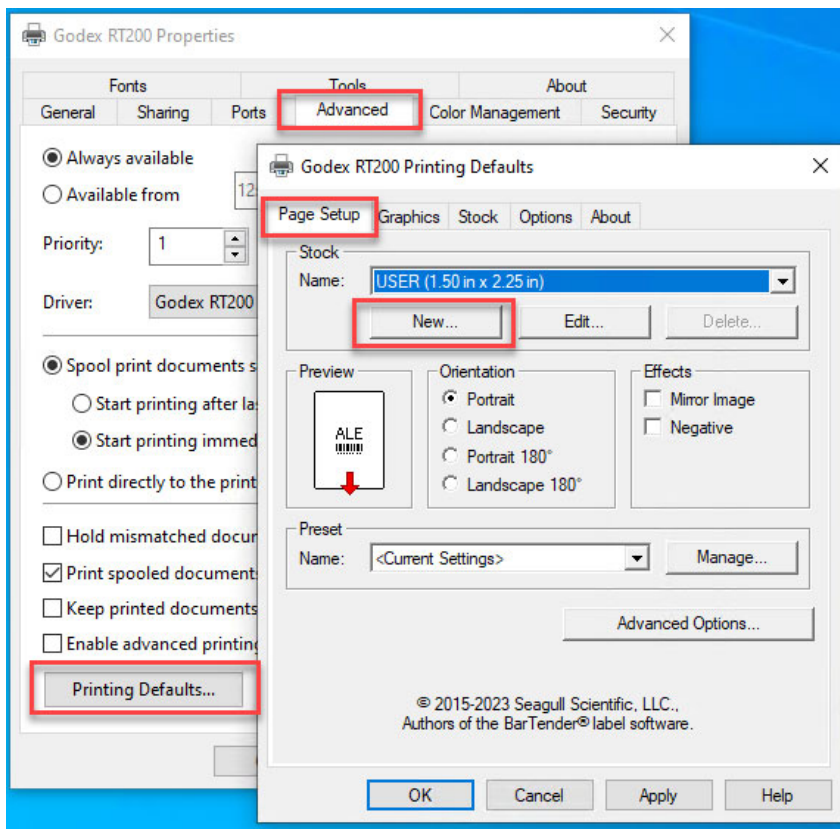
Cancel

OK

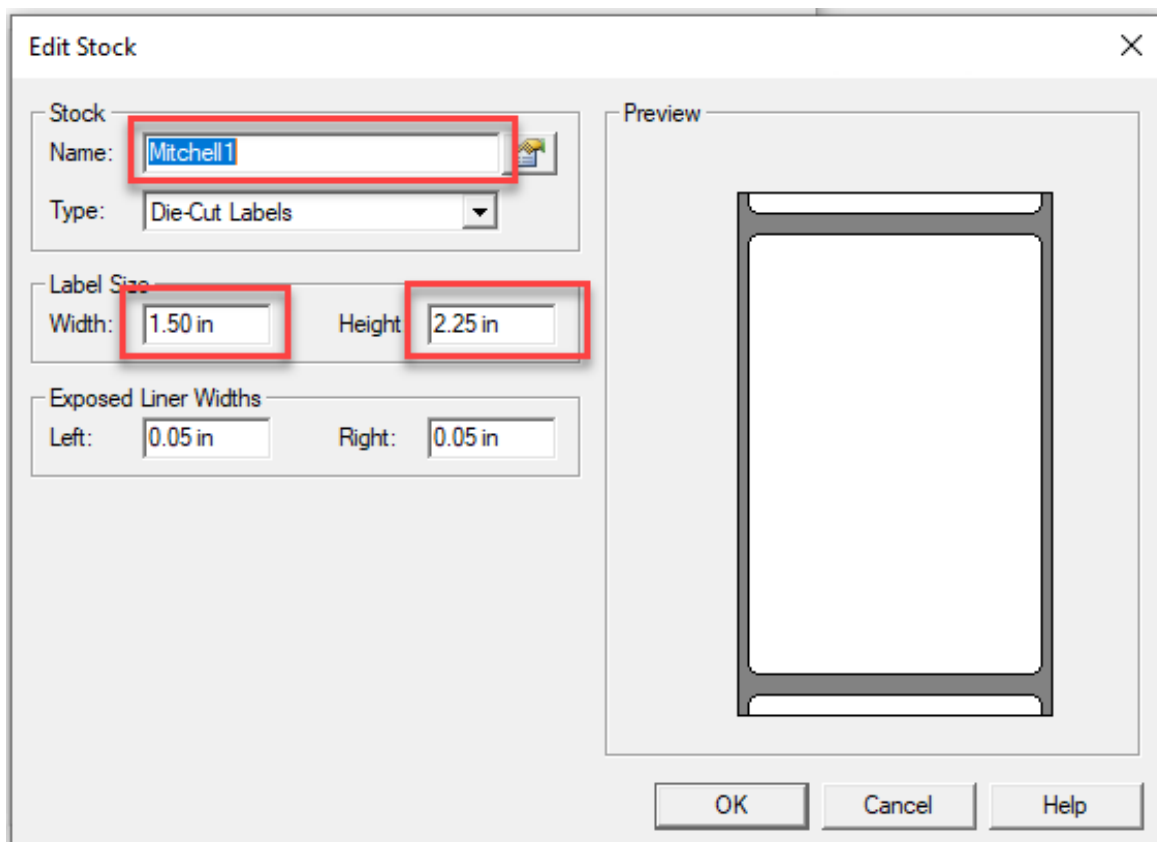
*A file can be added to in the "Select Logo" to populate the shop information.
You may request a logo file from Oil Sticker Supply if you need help.

Setup in Windows driver. (Windows10)

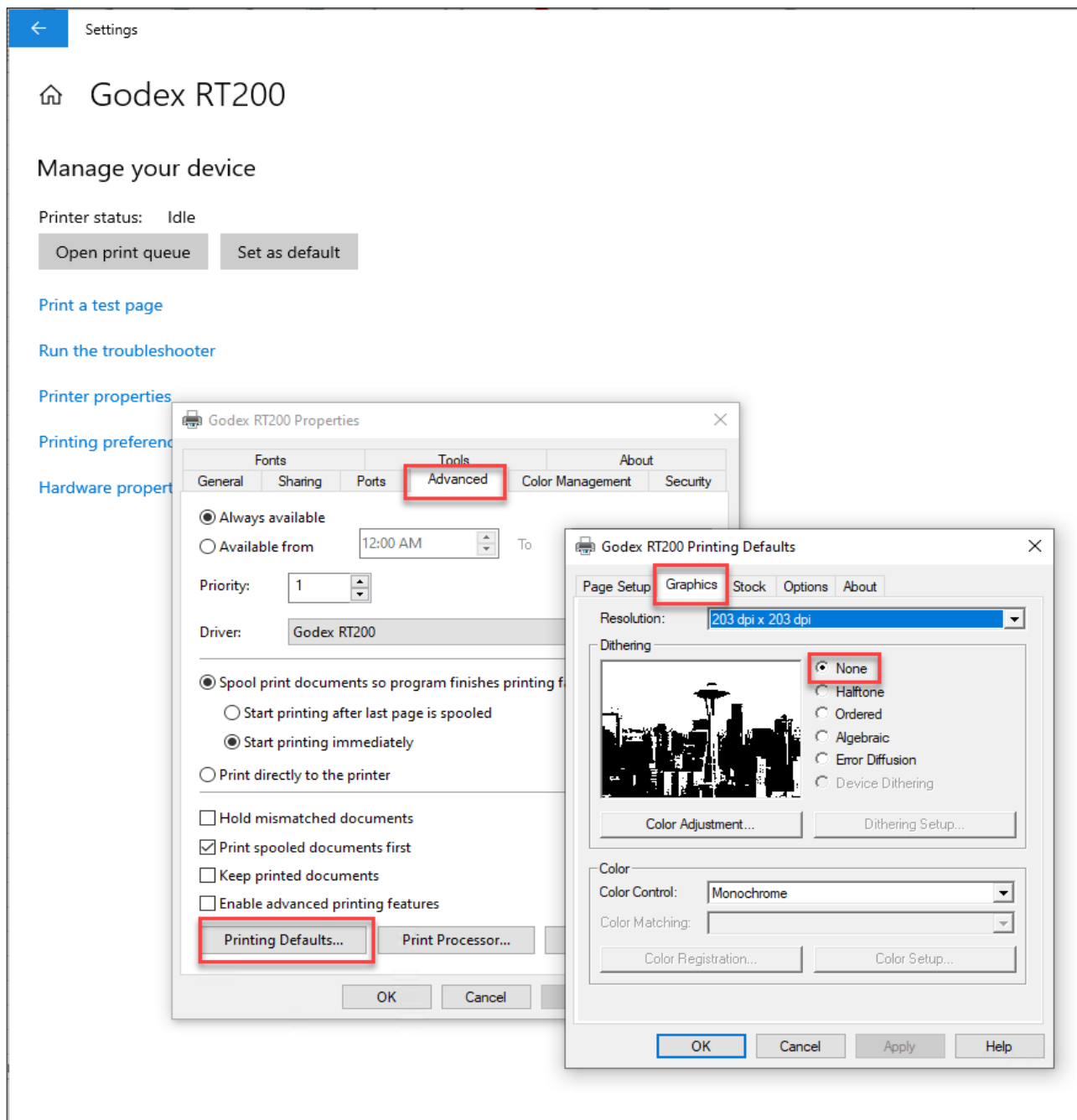
Add a new paper size in the driver (if you use the Mitc SC-Label, you will need to rotate 180 degrees)



Add new paper size (stock) in the driver settings. I make sure they are in both Printer Properties, and Printer Preferences,



For better print quality, I set Dithering to "None"



If you need help getting your new Oil Sticker Supply labels working, please give us a call at 605-332-0102

Thank you for your business!